

# Anti-MSLN hlgG1 Reference Antibody (Anetbio)

## Product Information

|                        |  |
|------------------------|--|
| <b>Product Name</b>    | Anti-MSLN hlgG1 Reference Antibody (Anetbio)   |
| <b>Storage temp.</b>   | Store at 2-8°C short term (1-2 weeks).Store at $\leq -20^{\circ}\text{C}$ long term. Avoid repeated freeze-thaw.                       |
| <b>Catalog# / Size</b> | GM-87711MAB-1mg / 1 mg<br>GM-87711MAB-5mg / 5 mg<br>GM-87711MAB-25mg / 25 mg<br>GM-87711MAB-50mg / 50 mg<br>GM-87711MAB-100mg / 100 mg |

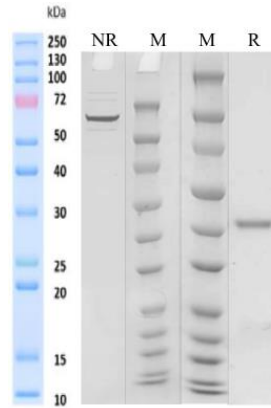
## Antibody Information

|                          |  |
|--------------------------|--|
| <b>Expression System</b> | CHO  |
| <b>Aggregation</b>       | < 5% as determined by SEC-HPLC   |
| <b>Purity</b>            | > 95% as determined by SDS-PAGE  |
| <b>Endotoxin</b>         | < 1 EU/mg, determined by LAL gel clotting assay  |
| <b>Sterility</b>         | 0.2 $\mu\text{m}$ Filtered   |
| <b>Target</b>            | MSLN   |
| <b>Clone</b>             | Anetumab   |
| <b>Alternative Names</b> | MPF, SMRP  |
| <b>Source/Isotype</b>    | Human IgG1(K214R), Kappa   |
| <b>Application</b>       | /  |
| <b>Description</b>       | MSLN is over expressed in several human tumors, including mesothelioma, ovarian cancer, pancreatic adenocarcinoma, lung adenocarcinoma, and cholangiocarcinoma. MSLN is a tumor differentiation antigen that is normally present on the mesothelial cells lining the pleura, peritoneum and pericardium. Since mesothelin is overexpressed in several cancers and is immunogenic, the protein could be exploited as tumor marker or as the antigenic target of a therapeutic cancer vaccine. |
| <b>Formulation</b>       | phosphate-buffered solution, pH 7.4.   |

Version:3.1

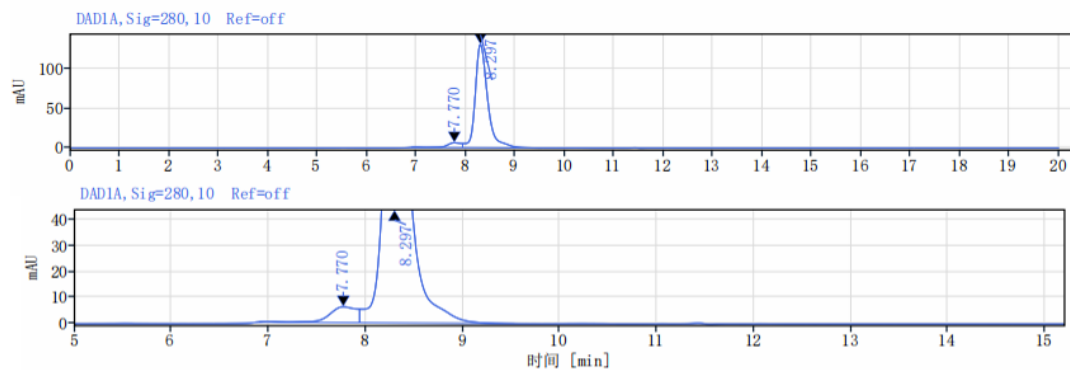
## Data Examples

### SDS-PAGE



On SDS-PAGE under reducing (R)/non-reducing(N-R) condition. The gel was stained overnight with Coomassie Blue. The purity of the protein is greater than 95%.

### SEC-HPLC



The purity of this product is more than 95% verified by SEC-HPLC